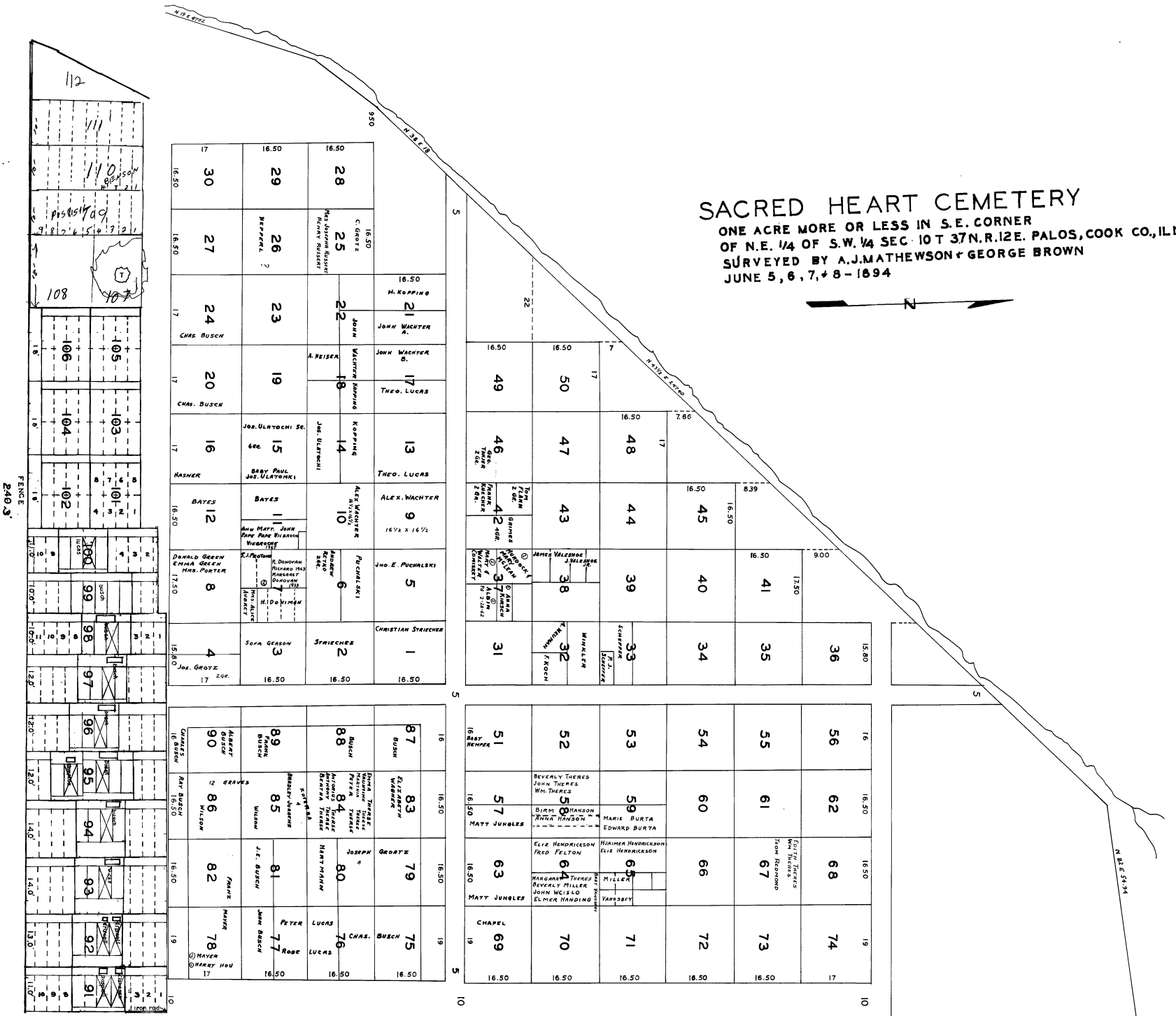
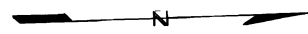


SACRED HEART CEMETERY
 ONE ACRE MORE OR LESS IN S.E. CORNER
 OF N.E. 1/4 OF S.W. 1/4 SEC. 10 T 37N. R. 12E. PALOS, COOK CO., ILL.
 SURVEYED BY A.J. MATHEWSON & GEORGE BROWN
 JUNE 5, 6, 7, & 8 - 1894



112
 111
 110
 109
 108
 107
 106
 105
 104
 103
 102
 101
 100
 99
 98
 97
 96
 95
 94
 93
 92
 91

112
 111
 110
 109
 108
 107
 106
 105
 104
 103
 102
 101
 100
 99
 98
 97
 96
 95
 94
 93
 92
 91