

ST. MARY'S CEMETERY,

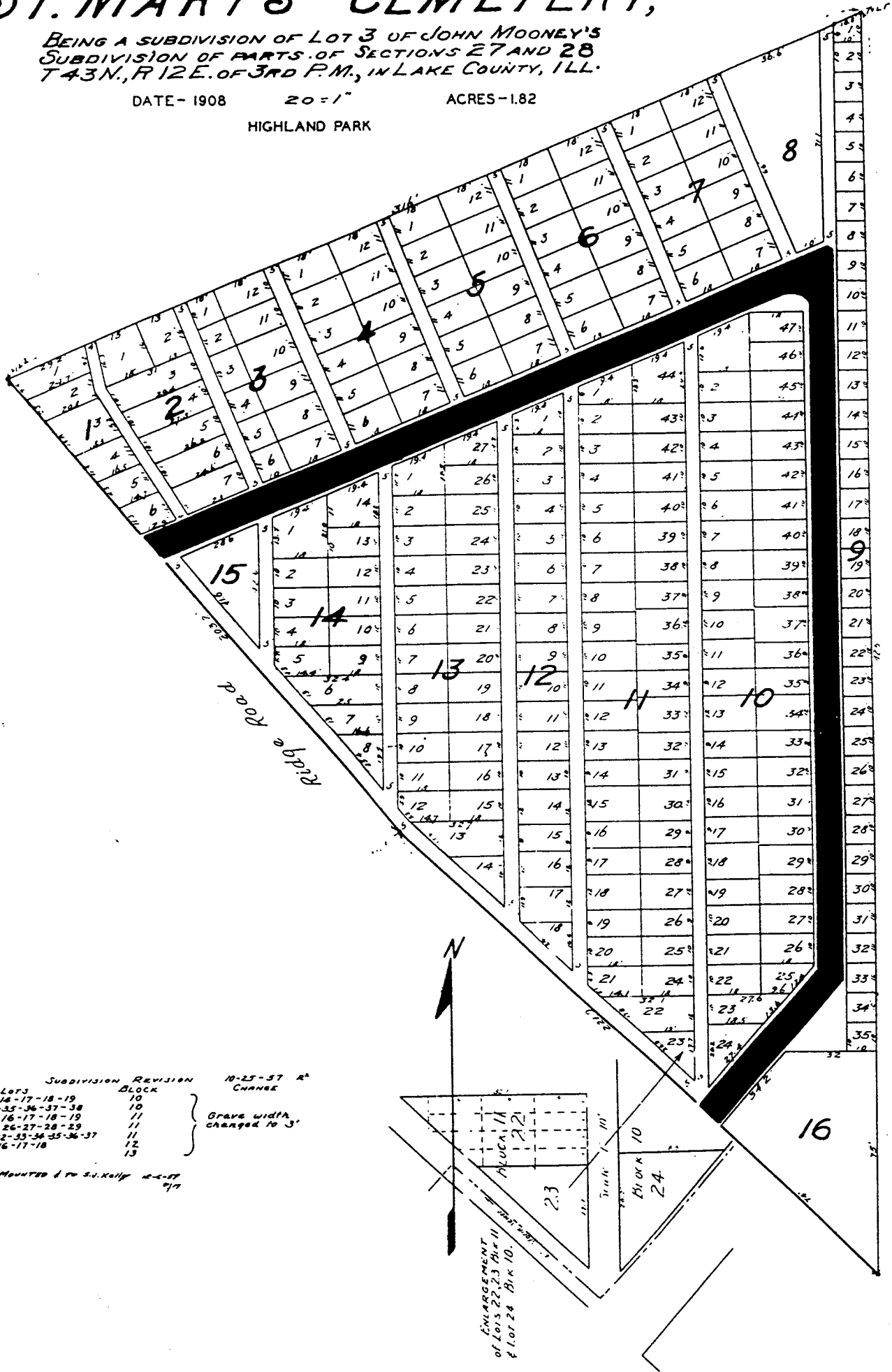
BEING A SUBDIVISION OF LOT 3 OF JOHN MOONEY'S
SUBDIVISION OF PARTS OF SECTIONS 27 AND 28
T 43 N., R 12 E. OF 3RD P.M., IN LAKE COUNTY, ILL.

DATE - 1908

20 = 1"

ACRES - 1.82

HIGHLAND PARK



Lots	Subdivision Revision Block	10-25-57 R CHANGE
12-13-14-17-18-19	10	} Grave width changed to 3'
23-24-25-26-27-28	11	
14-15-16-17-18-19	11	
22-23-24-27-28-29	11	
30-31-32-33-34-35-36-37	11	
14-15-16-17-18	12	
13-14	13	

COPY MOUNTED & TO S. KELLY 4-2-57

ENLARGEMENT
of Lots 22, 23, 24 = 11
& Lot 24 = 10.